




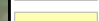
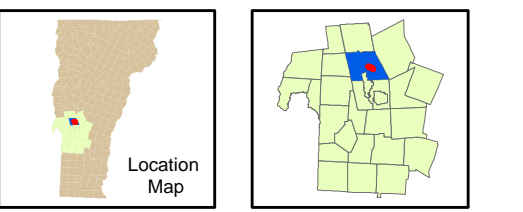
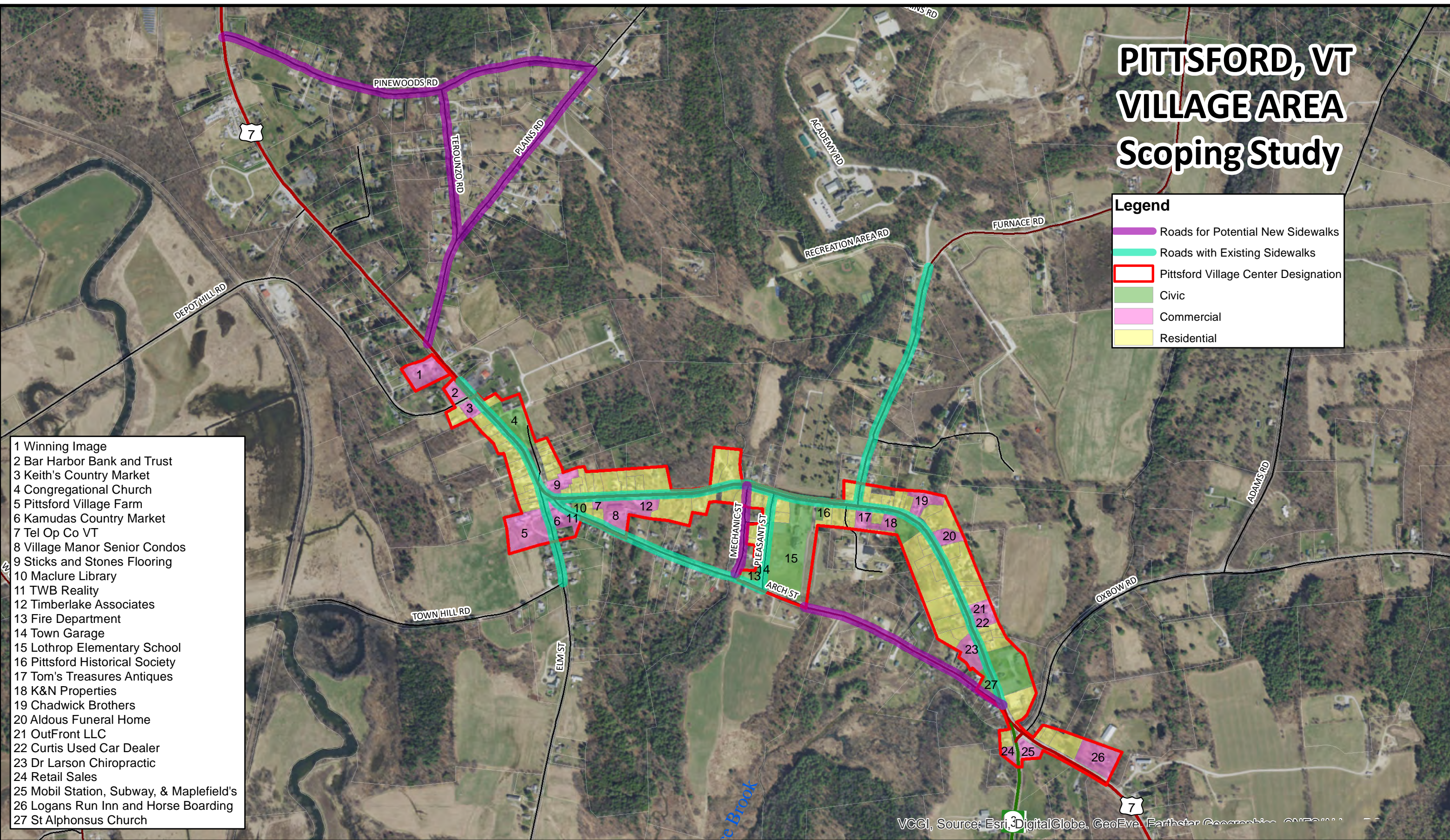


PITTSFORD, VT VILLAGE AREA Scoping Study

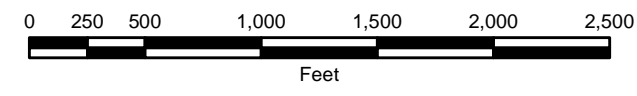
Legend

-  Roads for Potential New Sidewalks
-  Roads with Existing Sidewalks
-  Pittsford Village Center Designation
-  Civic
-  Commercial
-  Residential

- 1 Winning Image
- 2 Bar Harbor Bank and Trust
- 3 Keith's Country Market
- 4 Congregational Church
- 5 Pittsford Village Farm
- 6 Kamudas Country Market
- 7 Tel Op Co VT
- 8 Village Manor Senior Condos
- 9 Sticks and Stones Flooring
- 10 Maclure Library
- 11 TWB Reality
- 12 Timberlake Associates
- 13 Fire Department
- 14 Town Garage
- 15 Lothrop Elementary School
- 16 Pittsford Historical Society
- 17 Tom's Treasures Antiques
- 18 K&N Properties
- 19 Chadwick Brothers
- 20 Aldous Funeral Home
- 21 OutFront LLC
- 22 Curtis Used Car Dealer
- 23 Dr Larson Chiropractic
- 24 Retail Sales
- 25 Mobil Station, Subway, & Maplefield's
- 26 Logans Run Inn and Horse Boarding
- 27 St Alphonus Church



Existing sidewalks may be on both sides of the road or only one side.



1 inch = 826.57 feet

Date: 3/2/2021

