

# Town of Pittsford Newsletter

## MUNICIPAL OFFICE HOURS:

Mon. through Wed.

8-4:30

Thursday

8- 6

Friday

8-3

**After Hours Drop  
Box on Left of  
Parking Lot Exit**

Green Up Day	
Pittsford Day Concerts	1
Town-wide Yard Sale	
Meeting Schedules, Depot Hill Road Paving, Proctor Water News, Pittsford Business Community Group, Sewer System Upgrade Project, Wind Farm Proposal	2
Lister's Report, Trails Committee Ice Cream Social & Concert	3
Recreation Director Updates, Swimming Pool Policy, Hazardous Waste Pickup Days, Fishing Derby	
Pittsford Senior Luncheons	4
Pittsford Recreation Summer: Summer Day Camp	
Swim Lessons & Rec. Area Rates	
Disc Golf, Pre-season Soccer Camp	
Summer Basketball Camp	5
Historical Society News, Zoning Vacancy, Lothrop School News	
Caverly Preschool News	
VLCT Wellness Leader Program	6
Maclure Library, Food Shelf	7
Great Escape/Six Flags/ Bromley Adventure Park Tickets	
Memorial Day Parade, Website Address, Town Office dates closed	
Summer Newsletter Deadline	8

## GREEN UP DAY MAY 5, 2012

The Pittsford Recreation Department, Pittsford Community Corp. (PCC) and Omya will once again be teaming up for **Green Up Day** in Pittsford on Saturday, May 5. Omya will provide an extra **Green Up Day** trash dumpster that will be located at the Town Municipal Office on 426 Plains Road. \*Residents are strongly encouraged to drop off their full **Green Up Day** bags at the Town Office.\*



Omya personnel will be available from 8:00 a.m. to 2:00 p.m. to assist people unloading their **Green Up Day** bags and filling the dumpster. As in prior years, **Green Up Day** bags can also be deposited at the Transfer Station.

Compliments of our friends at Omya, a light lunch of hot dogs and chips from Keith's Country Store will be available at the Town Office from 11:00 a.m. to 1:00 p.m. We hope you will stop by to mingle with your neighbors and pick up a reusable shopping bag. Join us for some fun!

Volunteers are needed for the **Green Up Day**. Every hand helps. Each person who volunteers to help clean up the Town on **Green up Day** means less work for others. Please consider spending an hour or two with your friends and neighbors to help clean up our roadsides on Saturday, May 5th. **Green Up Day** bags will be available at the Town Offices from April 30 to May 4 from Randy Adams, Pittsford Recreation Director. Randy will be coordinating the volunteers and the roads to be covered. If you plan on helping, please contact Randy at 802-483-6500 ext. 17 or e-mail him at [Recreation@pittsfordvermont.com](mailto:Recreation@pittsfordvermont.com). We hope to see you out and about on May 5 helping to make Pittsford a cleaner town for all to enjoy.

## PITTSFORD DAY IS SHAKING THINGS UP!



This summer we have some exciting and welcome changes to our annual Town celebration. This year instead of one, long, weather-dependent day, we are spreading the joy with 3 evening concerts.

These live music bands will perform under the pavilion at the Recreation Area and promise to offer a couple of hours of wonderful entertainment each evening. The food and activities of our traditional Pittsford Day will be spread out through the different concerts (face painting, games & demonstrations, etc...). There will always be at least one type of food for sale and of course bringing your own picnic dinner is fine too (remember, we have grills).

All of these concerts are free of charge and open to the public. Bring your family and friends, your bathing suit, chairs and blankets and be prepared to have a relaxed and entertaining evening.

<u>Dates</u>	<u>Time</u>	<u>Bands Performing</u>
Friday, June 1	6:00 to 8:30PM	Steve Spensley & Friends
Saturday, July 14	7:00 to 9:00PM	On The Rocks sponsored by Omya
Sunday, August 12	6:00 to 8:00PM	Aaron Audett Band



### PITTSFORD TOWN -WIDE YARD SALE

Due to popular demand, the Recreation Department will be sponsoring a Town-wide yard sale on **Saturday, June 9, 2012 from 8:00 AM-2:00 PM. FEE \$5.00. Deadline** to be included on the Town-wide list is **Friday, June 1, 2012.** Residents must register their sales location with the Recreation Department. A complete list of sale locations and a street map of Pittsford will available on the Town of Pittsford website, [www.pittsfordvermont.com](http://www.pittsfordvermont.com). Maps can be picked up at the Maclure Library and Keith’s Country Store on Sat., June 9. For more information, contact Recreation Director Randy Adams at 483-6500 ext. 17 or e-mail [Recreation@pittsfordvermont.com](mailto:Recreation@pittsfordvermont.com).

### PITTSFORD TOWN MEETING MEETINGS HELD AT THE MUNICIPAL OFFICE

Pittsford Select Board: 1st and 3rd Wednesday at 6:30PM

Pittsford Recreation Committee: 2nd Tuesday at 6:30PM

Pittsford Water & Sewer Commission: 3rd Tuesday at 6:30PM

Pittsford Planning Commission: 4th Thursday at 7:00PM

PEG TV Channel 21 videotapes Select Board meetings and they can be viewed at [www.pegtv.com](http://www.pegtv.com). Click [video on demand](#).

### DEPOT HILL ROAD PAVING

Please note that re-construction and paving on Depot Hill Road will begin this summer. To complete this project in a timely manner with the least amount of inconvenience for travelers on Depot Hill Road, the road will be closed to thru traffic starting in June 2012. Thank you for your patience while the Town Highway crew and paving crew complete this much needed repair work. If you have questions or concerns, please call the Highway Garage at 483-6886 or the Town Manager at 483-6500 ext 20.



### PROCTOR WATER NEWS

The Town of Proctor plans to abandon the water main that serves approximately 70 customers located in Pittsford (and a few in Chittenden). In an effort to help those threatened with the loss of water, the Town of Pittsford funded an engineering study which concluded that, due to topography and elevations, the most cost-effective for most customers was the drilling of individual wells. The Town of Pittsford has also tried to help by providing information as it becomes available on such topics as well-drilling plans to the allocation of shares of the \$250,000.00 Proctor has set aside to compensate abandoned customers. Please note that there is a link to Proctor Water News on the Town of Pittsford’s website at [www.pittsfordvermont.com](http://www.pittsfordvermont.com) For those seeking more information, please contact Proctor Town Administrator Stan Wilbur at 459.3333 x13 or Pittsford Town Manager John Haverstock at 483.6500 x20.

### PITTSFORD BUSINESS COMMUNITY GROUP

The Pittsford Business Community Group (PBCG) is, in-part, sponsoring a Farmer’s Market. We are calling for all potential farmers, vendors and interested parties to meet at the Town Office, 426 Plains Road, in the conference room on Monday evening, April 30, 6:00 PM. If you can’t attend in the evening, please come on Tuesday morning, May 1, at 8:30 AM.

A Farmer’s Market is a State regulated “business”, and must have a governing body of at least 3 people. Also, a list of a list of participating vendors is required before we can file as an incorporated, non-profit business and then file for a Tax identification number.

Site details and Liability Insurance coverage are being worked out but, WE NEED YOU! Remember, if you didn’t grow it, bake it, or hand make it—don’t bring it to market!

You may contact Kelley Lyon at 483-2218 or [vtmusictherapy@comcast.net](mailto:vtmusictherapy@comcast.net). Updates will be on PBCG’s website:

### SEWER SYSTEM UPGRADE PROJECT

Work to complete the sewer system upgrade project will take place this Spring and Summer. This will include bringing the new sewer line from the Fire Station up Arch Street to the intersection of Route 7/Elm Street by late May/early June and then the reconstruction of Pleasant and Arch Streets in August. The new Elm Street pump station should be coming on-line soon, too.

Of course, the continued patience of Town residents and particularly those residing within the work zone is greatly appreciated.

Please contact the Town Manager with any questions or concerns that you may have. Thank you.

### WIND FARM PROPOSAL



The communities of Pittsford, Castleton, West Rutland and Hubbardton have been approached by Reunion Power of Manchester, Vermont with a proposal to construct a 20-turbine 50 megawatt wind farm project. As this project has State-wide implications with regard to the power grid, Act 248 mandates that the State’s Public Service Board (“PSB”) will have the final say as to whether the project moves forward to construction. There has not yet been a formal Application filed with the PSB. Therefore, local officials have relatively little information to share.

Reunion Power plans to lay out its proposal to the Pittsford Select Board at its meeting on Wednesday, June 6. All those wishing to be heard regarding the proposed project will have ample opportunity to speak out. Act 248 mandates, for example, that the PSB hold local hearings for this purpose. There will likely be other public forums at which public comment will be entertained as well.

Please contact the Town Manager with any questions or concerns that you may have. Thank you.

### LISTERS' REPORT

We welcome John Eugair back to the Board of Listers following the March election. John brings extensive computer knowledge and a wealth of experience in the assessment process.

We urge residents and owners of commercial property to come into the Listers Office to check the accuracy of the information on their Listers Card. This is an excellent way to increase understanding of the assessment system. We suggest calling in advance for an appointment.

Regarding the veterans exemption, veterans with a disability of 50% or greater are entitled to a partial exemption of property value from property taxes. Those veterans should have received a letter from the Office of Veterans Affairs which they should sign and return to receive this reduction in taxes. Up to \$40,000 of property value is exempt from municipal tax; a maximum of \$10,000 of property value is exempt from education tax. If you are qualified but have not received a letter, call the Vermont Office of Veterans Affairs at 802-828-3379.

Regarding the Homestead Exemption (HS-131), check the Vermont Tax booklet available at the Pittsford Library or online at [state.vt.us.gov/tax](http://state.vt.us.gov/tax) to get information on filing the HS 131 Homestead Exemption. If filed after Sept 4, 2012, there is an 8% penalty. HS-131 renews automatically for homeowners who have filed previously.

Also note that there is a Lister page on the Town website at: [www.pittsfordvermont.com](http://www.pittsfordvermont.com)

Historical Note: In the early days of Vermont's existence as a State, inhabitants were expected to submit a "list" of all their "rateable estate" which included: livestock, house clocks, watches, wagons, sleighs, dogs, swarms of bees, etc. including money on hand and stock in corporations. This list was carefully scrutinized and validated by the "Listers". In 1888, the law changed to tax only real estate because it was considered more tangible and a better indication of a person's ability to pay and therefore a fair basis for taxation.

### TRAILS REPORT

Dry, warm weather and a calm winter means that most of the trails are open and getting lots of use. New weather-proof map boxes are soon to be installed at trailheads. New signs (thanks to H. Hirschmann Ltd and Rob Ketcham) have been placed at the Cadwell Trailheads with more coming for the Bald Peak Trail.

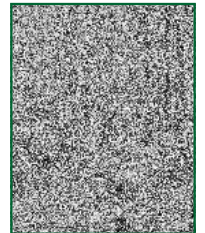
The Bald Peak Trail will be improved this Spring adding another view point on the South side of the ice cave gorge plus additional trail thereby making it a loop trail.

As some have discovered, there is a loop trail (High Meadows) accessible from Adams Rd and/or from Split Rock Trail, which offers some nice views of the Adirondack Mountains on a clear day.

The Hudson Trail (off Arch Street with parking behind the firehouse) offers a very pleasant way to meander along Sugar Hollow Brook beneath towering Hemlocks. Work will start soon to improve the trail entrance and install benches.

Trail volunteers are needed to assist in maintaining existing trails and adding new trails. Work sessions are just 2 to 3 hours a few times each year and offer an enjoyable time in the clean Vermont air.

Benches for Trails: There are places along trails where some seating would be nice for folks to rest or enjoy a view. If you and your family would like to donate a bench, perhaps in memory of someone important in your life, please contact Randy Adams at the Town Office or Bob Harnish (483-6220).



### *START OF SUMMER ICE CREAM SOCIAL & CONCERT*

*FRIDAY, JUNE 1, 2012*

*6:00—8:30P.M.*

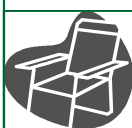
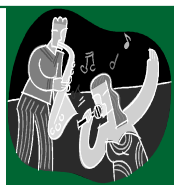
*PITTSFORD RECREATION AREA*

*Music, Fun and Sundaes*

*It's free and everyone is welcome! Please bring lawn chairs or blankets.*

*Sponsored by*

*Pittsford Recreation Department & Maclure Library*





**A few notes from the Recreation Director...**

With the lack of snow cover this winter, the entrance gate at the Recreation Area has been opened on daily since February as sort of a trial period to see just how many people would visit during the winter. This long extended dry and relatively warm period of time has been good news for all the families who enjoy playing on the playground equipment, walking the trails, and playing disc golf this winter. With visitor counts up the Recreation Department would like to remind everyone about a few items that have come to our attention already this year. Residents who walk their dogs at the Recreation Area are reminded to please pick up after your dogs. Recycled newspaper bags are available free of charge at various dispensers at the Recreation Area to use to pick-up after their pets. Waste bags can be disposed in any of the garbage cans. Secondly it's important for pet owners to know that the Town of Pittsford does have an "Animal Ordinance" that clearly states pet owner must have "Physical or vocal control" when the animal is not on the owners' or keepers' property. Please keep this in mind when walking your pets in Pittsford. Complete copies of the Animal Ordinance can be found at the Town Office and at [www.pittsfordvermont.com](http://www.pittsfordvermont.com).

If you have left or lost something at the Recreation Area, please contact the Recreation Department, 483-6500 ext. 17 to claim your item(s).

For the first time in over 11 years, the Pittsford Swim Area annual season passes will be increasing in cost by \$5. **Beginning July 1, 2012**, the new prices will be \$35 for a Pittsford resident and \$55 for non-residents. Get your 2012 family pass now to be sure you get it at the reduced rate. The Recreation Department has set a goal of selling 100 season passes before the increase takes place. Different and exciting programming will take place at the Recreation Area this summer mentioned in this newsletter. **DON'T MISS IT.** Season passes are available exclusively at the Pittsford Town Offices and are on sale now!

**Swimming Pool Policy**

The weather outside is warming up and soon people will be thinking about fun in the sun at poolside. The Town now offers swimming pool-filling services at reasonable rates to folks whose pool is within 300 feet of a hydrant. Please examine the Town's policy on this topic on the Water Department page of the Town's website: [www.pittsfordvermont.com](http://www.pittsfordvermont.com) OR contact Town Manager John Haverstock at 483.6500 x20 or Water Superintendent Bruce Babcock at 483.6778 for details. Thanks and happy swimming!

**Need to get rid of Household Hazardous Waste (HHW)?**

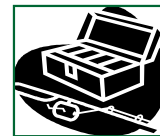
The Rutland County Solid Waste District is proud to announce that the HHW Depot at the Gleason Road Transfer Station in Rutland will now be open the following Saturdays during the spring and summer of 2012 in addition to its normal workday hours:

**Saturdays:** From 7:00 a.m. – 3:00 p.m. May 5, June 2, July 7, August 4, Sept. 1 & Oct. 6, 2012. Contact Tom Remes at 770-1333 for more information.

**PITTSFORD TRANSFER STATION 12:00 to 3:00PM**  
MAY 19, July 14 & OCT. 27, 2012.

**PITTSFORD FISHING DERBY**

**FREE!!!**



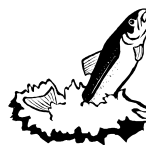
**FREE!!!**

**DATE: SATURDAY, MAY 19, 2012**

**TIME: Registration 9 – 10 am**  
**Fishing 10 am – Noon**

**FOR: PITTSFORD KIDS 2 - 12**

**WHERE: Wheeler/Smith Pond** (Behind Dan Keith's residence just south of Barnard Funeral Home. Look for signs next to Rte. 7) Please check for ticks during and after the fishing derby.



**JOIN US FOR PRIZES, FOOD, & FUN!!**



**PITTSFORD SENIOR GROUP LUNCHEON MENU 2012**

<u>Date:</u>	<u>Menu:</u>	<u>Must RSVP:</u>
May 17	Mac & Cheese, veg. beef soup, pumpkin citrus bars	May 8
June 28	Meatloaf, twice baked potatoes, choc. cream pie	June 19
July 26	BBQ (chicken, hamburgers, hot dogs), baked beans, cole slaw	July 17
Aug. 23	Chicken salad, vegetable pasta salad, pickled beets & cookies	Aug. 14

A salad bar is included. All foods are homemade.

**Suggested donation of \$4.50 for 60 and up. Must pay \$6.00 if under age 60. Reservations are Necessary! All luncheons are on Thursdays at 1 PM at the Vermont Police Academy in Pittsford. RSVPs & questions contact Randy Adams 802 -483-6500 ext. 17 or [Recreation@pittsfordvermont.com](mailto:Recreation@pittsfordvermont.com).**

**PITTSFORD SENIORS**

Senior citizens of Pittsford have organized a senior group. Pittsford Seniors meet at the Maclure Library on the first Friday of each month at 9:00 AM. All seniors in the Pittsford area are invited and encouraged to attend. Come and bring your ideas!



# PITTSFORD RECREATION DEPARTMENT

## Summer Programs

For more information, please contact Randy Adams, Recreation Director, at 483-6500 ext 17 or Recreation@pittsfordvermont.com.

### PITTSFORD SUMMER DAY CAMP 2012

After a great summer in 2011, Julie Ketcham is back as Summer Day Camp Director with more exciting themes for camp this year! Marc Vitagliano and Craig Drummond will be by her side again to take campers through the 6 movie-themed weeks of camp.

**Week 1 June 25-June 29: Finding Nemo**

**Week 2 July 2-6: Monsters Incorporated**

**Week 3 July 9-13: The Blind Side**

**Week 4 July 16-20: Willy Wonka & the Chocolate Factory-**

**Week 5 July 23-27: Under the Sea**

**Week 6 July 30-August 3: Babe**

Descriptions of each week's activities will be listed on the the Town's website: [www.pittsfordvermont.com](http://www.pittsfordvermont.com). located on the Recreation Department page with a link for the application forms.



### The Pittsford Recreation Area now has 18 holes of disc golf for your enjoyment!

The Recreation Department would like remind everyone that there are now 18 holes of disc golf at the Recreation Area. Disc Golf is an inexpensive physical activity for the entire family which is easy to learn, yet takes a lifetime to master. There is a beginner and advanced tee location on each hole to challenge any ability level. Mostly it's FUN!!! Check the course out at: <http://www.youtube.com/watch?v=fnWIpiUQxns>. Thank you Terry Poor & Tony Freson for their vision, hard work, and seeing the entire project through. Sturdy footwear is recommended! Also, as with any time in the woods, you should check for ticks after playing.

**Get out and play!**



### PRE-SEASON SOCCER CAMP 2012

OV Middle School Boys Head Coach John White will be running the camp at the Pittsford Recreation Area, July 23-26 from 5-8PM. This camp is open for boys & girls grades 4th-9th who live in the Rutland Northeast Supervisory Union and surrounding towns (such as Proctor & Chittenden). Each day will include skill sessions, physical fitness drills and live games. Camp will emphasize proper soccer techniques and attitude in an effort to better the player's game & character. Participants will be divided appropriately by age and skill level. The fee for each child is \$20 which includes a camp T-shirt, along with free swimming at the Pittsford Swim Area each day after their workouts.



### A MESSAGE FROM OUR SWIM AREA SUPERVISOR & SWIM INSTRUCTOR, KAYLA GALLIPO



As summer is just around the corner, it's time to start thinking about fun activities and I hope that taking swimming lessons at the Recreation Area is one of them! I am looking forward to another great season at the swim area teaching swimming. This is a great program for younger swimmers looking to gain new skills and for older kids looking to refine the swimming skills they've already learned to become a more efficient swimmer. Swimming is a life-long skill that everyone should know, it's fun, and it's great exercise. Come gain these skills at the Pittsford Recreation Area! Enjoy the rest of the school year and I look forward to seeing you at the Rec! Kayla Gallipo

### SWIM LESSONS 2012

June 18– June 29 Session #1

July 2 – July 13 Session #2

July 30– Aug. 10 Session #3

### RECREATION FEES 2012

**Swimming Area Season Pass -- Resident: \$30.00; after July 1: \$35.00.**

**Non-Resident: \$50.00; after July 1 \$55.00.**

**Swimming Lessons -- Resident First Child: \$10; Additional Children \$5 each.**

**Non Resident \$20: Additional Children \$10 each.**

**Tennis Court Season Pass-Resident \$5 /Non Resident \$10**

**Season Passes are Available at the Town Clerk's Office**

### Summer Basketball Camp



Come join Otter Valley Varsity Coaches Nathan Bellomo and Ray Counter along with other area coaches and varsity players.

**Camp philosophy:** Players will work on their fundamentals while having fun but also learn respect, sportsmanship, responsibility, and the value of hard-work. Coaches will treat each camper as if they were their own player.

**Where: Otter Valley Union High School Gym**

**Who:** Boys and Girls (Entering) 4<sup>th</sup> – 9<sup>th</sup> Grade

**Cost:** \$20 Entry Fee includes a camp t-shirt

**When:** July 30th - Aug 2<sup>nd</sup>

**Time:** TBD (Evening times; ie. 5:30pm-7:30pm) More information to follow.

## HISTORICAL SOCIETY NEWS



The first members' potluck supper and meeting was held on March 11th.

The program was a screening of a film about the Caverly Child Health Center, which operated from 1947 to 1973. For 17 years as the much-loved director of education, Harold Blaisdell is starred as the designer of programs tailored to the special needs of physically handicapped and seriously ill children. He taught the bedridden children himself. The original film is in the Vermont Historical Society's archives.

With the help of Rod Drown and the Pittsford Fire Department, we will again host the Memorial Day ceremonies at Eaton Hall on Monday, May 28, beginning at 12:30 p.m. and concluding with refreshments for all and Open House at the Museum. Everyone is welcome.

If you love antique cars and trucks, mark the week of July 15 on your calendars: The 56th Annual Summer Tour of the Model T Ford Club International will stay at the Holiday Inn in Rutland at night and take day trips through western and southern Vermont all that week. On Tuesday morning the 17th, between 150 to 200 Model T drivers will visit the Vermont Marble Museum in Proctor, then come through covered bridges to Pittsford. Expect to see the cavalcade in Pittsford village about mid-morning heading to the New England Maple Museum. On their way, though, Model T Club members Ernie and Melanie Clerihew have invited them to stop by our museum, so be on the lookout! Read the entire week's day trip destinations in the June issue of the "Rutland Business Journal."

To coincide with the Model T tour, Anne Pelkey and her helpers are planning a new exhibit in Eaton Hall on early Pittsford cars, trucks and other forms of transportation.

We welcome new member Betsy Hendrick of New Jersey. She is descended from Elizabeth Rowley, daughter of Jonathan and Elizabeth(Hopkins) Rowley of Pittsford.

The Historical Society Museum is now open on Tuesdays from 9 AM to 4 PM. The Museum will also be open on Sundays from 1 to 4 PM starting July 1st throughout the summer.

The Historical Society's Annual Tag & Bake Sale will be a Saturday in July. Watch local media, our website [www.pittsfordhistorical.com](http://www.pittsfordhistorical.com) and the sidewalk sign at the Museum for more details. The Museum's phone number is 802-483-2040.

## ZONING BOARD OF ADJUSTMENT VACANCY

The Town of Pittsford has one vacancy on the Zoning Board of Adjustment.

Residents interested in serving on the Board are asked to submit a letter of interest for consideration by the Select Board and the Zoning Board to: Town of Pittsford

Attention: John Haverstock, Town Manager  
P. O. Box 10, Pittsford, VT 05763



## LOTHROP SCHOOL BOARD NEWS

As the school year draws to a close we would like to say thank you to the community for approving the 2012-2013 budget and for your continued support. We are grateful to be able to offer a wide range of programs and opportunities to our students. We are also happy to report that Lothrop continues to incorporate collaboration across grade levels and disciplines through the Professional Learning Community Model. Next week is Teacher/Staff Appreciation week—a time for us to recognize the incredible work that is being done *each day* by our dedicated staff. Hats off to all those individuals who dedicate their time and energy to turning today's youth into tomorrow's leaders.

The last day of school will be June 14<sup>th</sup>. Please visit our website ([www.rnesu.org](http://www.rnesu.org)) to find out more about summer programs and opportunities at Lothrop. Our regular meetings are held the first Tuesday of every month at 6:30 in the Lothrop library. We welcome your attendance and input. At the time of this writing, the School Board of Directors is still looking to fill a vacated spot. Please contact Board Chair Roberta Enright at [renright@rnesu.org](mailto:renright@rnesu.org) if you are interested.

## CAVERLY PRESCHOOL NEWS

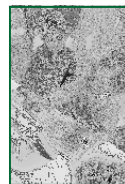
### YARD SALE/BAKE SALE

Please join us on Town-wide yard sale day to raise money for the Caverly Preschool program. Every purchase/donation wins a 5-minute jump in the bouncy house!

Saturday, June 9 from 8AM to 2PM

Location: Caverly Road, across from the Town Office

If you would like to help with the event or donate times, please contact Kelly Connaughton, 483-6351 or [kfield@yahoo.com](mailto:kfield@yahoo.com).



## VLCT PRESS RELEASE-WELLNESS PAYS FOR WELLNESS LEADERS!

Health Insurance Program returns money to municipalities and individuals for fostering and participating in healthy lifestyles.

**Montpelier, Vermont, March 27, 2012.** Fifty-nine Vermont municipalities recently received checks from the association through which they buy their health insurance because of their participation in a multi-level wellness initiative. Four of these organizations won outstanding achievement awards.

The Vermont League of Cities and Towns (VLCT) Health Trust, a non-profit health insurance pool for municipal governments, is delivering a total of \$167,963 to the municipalities that successfully completed its 2011 Wellness Leader program. Participating local governments tracked their performance in a number of wellness programs and initiatives during 2011 and are being rewarded for taking actions such as setting up a health and safety committee, hosting a flu shot clinic, and supporting their employees' healthy lifestyles. Each municipality's reward reflects its level of success in the program and is pro-rated to its annual health insurance premium. The highest single reward is \$21,447 to the Town of Essex.

Pittsford is a member town and nine employees and four of their spouses participated in the 2011 Wellness Leader Program. Pittsford received a check for \$4,193.00 for its participation.

## MACLURE LIBRARY NEWS



Tuesday, May 15 at 7:00 p.m. **Atonement by Ian McEwan**

On a hot summer day in 1935, thirteen-year-old Briony Tallis witnesses a moment's flirtation between her older sister, Cecilia, and Robbie Turner, the son of a servant and Cecilia's childhood friend. However, Briony's incomplete grasp of adult motives—together with her precocious literary gifts—brings about a crime that will change all their lives. As it follows that crime's repercussions through the chaos and carnage of World War II and into the close of the twentieth century, **Atonement** engages the reader on every conceivable level, with an ease and authority that mark it as a genuine masterpiece.

Saturday, May 26, 9:00 a.m. – 3:00 p.m. **Memorial Day Weekend Book Sale**

We are looking for donations of gently used books for our book sale. Just about everything is welcome: paperback, hardcover, fiction, current nonfiction, adult and children's books, movies, music and recorded books are encouraged. However, because we have to pay to take them away, please no National Geographic magazines, Readers Digest books, encyclopedias, textbooks, older medical books, moldy, musty or ripped books. Thanks! The Book Sale is Saturday, May 26, 9:00 a.m. – 3:00 p.m. rain or shine under the tents.

**Please keep an eye out for our sidewalk sign for upcoming events. If you are interested in e-mail notification of library events, please email [maclurelibrary@comcast.net](mailto:maclurelibrary@comcast.net) or call 483-2972 to be added to our list.**

## PITTSFORD FOOD SHELF

### Serving Pittsford, Proctor, Florence and Chittenden



The Pittsford Food Shelf would like to thank all those who donated to the Feinstein Million Dollar Food Challenge. Since we have another week before the challenge is completed, I do not have the final totals but will have them by the next newsletter. If now was not a good time to donate, that's OK...feel free to donate anytime at your convenience. Donations of food or money are always welcome. You can send your tax deductible donations to Pittsford Food Shelf, P O Box 553, Pittsford, VT 05763.

Summer lunch program is just around the corner. This program is for children who attend Lothrop. This program picks up where the school lunch program leaves off and runs from summer break in June until school begins. If you are new to the area and have children at Lothrop and would like to be involved with this program, stop by the Pittsford Food Shelf to sign up.

The Food Shelf is open Mondays 9 to 11 AM; Tuesdays 1 to 3 PM and Thursdays 4 to 6 PM. We are located at the south end of Keith's Country Store on Route 7. Proof of residency is a must with a recent utility bill.

We are in need of canned fruit, cereals, and brownie mixes. Feel free to drop your donations off at the Food Shelf or inside Keith's Country Store next to the squishy doors going into the Food Shelf. Please do not leave any donations outside as the weather or animals can affect items left.

Again, thank you for your support. If you have any questions or comments, feel free to give Robin Rowe a call at 483-2967.

From all of us at the Food Shelf, have a wonderful summer.

## "Sunshine Village"

Pittsford Town Office  
P.O. Box 10  
426 Plains Road  
Pittsford, VT 05763

Bulk Rate #1  
US Postage  
PAID  
Pittsford, VT 05763



**Pittsford Municipal Office will be closed Monday, May 28 and Wednesday, July 4, 2012.**

**Deadline for the next Pittsford Town Newsletter will be July 15, 2012. Please send Town articles to Linda Drummond at [Asst2manager@pittsfordvermont.com](mailto:Asst2manager@pittsfordvermont.com).**



### **MEMORIAL DAY PARADE MONDAY, MAY 28th**

Parade forms at the Village Green at Noon and starts at 12:30 PM. Ceremony to follow at the Historical Society Museum. (Eaton Hall) Museum will be open.

For more info contact Rod Drown 483-6421.

**VISIT OUR TOWN WEBSITE!  
[WWW.PITTSFORDVERMONT.COM](http://WWW.PITTSFORDVERMONT.COM)**



### **DISCOUNT TICKETS for GREAT ESCAPE/SIX FLAGS of NEW ENGLAND/ & BROMLEY ADVENTURE PARK**

The **Pittsford Recreation Department** in conjunction with the Vermont Recreation & Parks Association (VRPA), is happy to announce that the Town is offering discounted tickets to **THE GREAT ESCAPE, SIX FLAGS of NEW ENGLAND** and the **BROMLEY ADVENTURE PARK**. The regular season for Great Escape & Six Flags runs Memorial Day through Labor Day weekend.

**THE GREAT ESCAPE:** VRPA tickets are **\$30.00** (Regular Gate price is \$49.99 (plus tax) for a person over 48" tall and \$39.99 (plus tax) for anyone under 48"). **These tickets can be used for all ages!** Children 2 years and younger are free.

**SIX FLAGS of NEW ENGLAND:** VRPA tickets are **\$33.00** (Gate price is \$49.99 for anyone over 54" tall and \$39.99 for a person under 54"). **These tickets can be used for all ages!** Children 2 years of age and younger are free.

**BROMLEY ADVENTURE PARK:** VRPA tickets are **\$26.00** (Gate prices are \$34.00 weekdays (M-F) & \$39.00 weekends).

Tickets are available at the Pittsford Town Offices during regular business hours. Buying your tickets from the Pittsford Recreation Department allows residents to visit these amusement parks at a significantly reduced rate, but more importantly, you avoid standing in long lines for your tickets!!! **\*PAYMENT IN FORM OF EXACT CASH ONLY!!!**