

**MUNICIPAL**

**OFFICE HOURS:**

**Mon. through Wed.**

**8-4:30**

**Thursday**

**8- 6**

**Friday**

**8-3**

**After Hours Use Drop Box at Exit**



**VLCT PRESS RELEASE—WELLNESS PAYS FOR WELLNESS LEADERS!**

Health Insurance Program returns money to municipalities and individuals for fostering and participating in healthy lifestyles.

**Montpelier, Vermont, January 5, 2011.** In recognition of their participation in a wellness initiative, eighty-one (81) Vermont municipalities are receiving checks from the association that insures them, and eight have won outstanding achievement awards.

The Vermont League of Cities and Towns (VLCT) Health Trust, a non-profit health insurance pool for municipal governments, is delivering a total of nearly \$230,000 to the municipalities that successfully completed its 2010 Wellness Leader program. Participating local governments tracked their performance in a number of wellness programs and initiatives during 2010 and are being rewarded for taking actions such as setting up a health and safety committee, hosting a flu shot clinic, and supporting their employees' healthy lifestyles. Each municipality's reward reflects its level of success in the program and is pro-rated to its annual health insurance premium.

The VLCT Health Trust has 224 members (municipalities and local government organizations) and insures 4,842 employees and their dependents. VLCT acknowledged eight members for outstanding results in the 2010 Wellness Leader Program.

Pittsford is a member town and seven employees participated in the 2010 Wellness Leader Program. The **Town of Pittsford** was awarded "Most Improved from 2009, medium-sized municipality, raised score from 22% to 54%." Linda Drummond, Pittsford's Wellness Coordinator, attended the awards ceremony in Montpelier. Pittsford received a check for \$2,783.00 for its participation. The 2011 Wellness Leader Program is underway with more employees and spouses participating.

<i>Wellness Award</i>	1
<i>School Break Fun Day</i>	
<i>9th Winter Celebration</i>	
<i>Budget Summary</i>	2
<i>Water Upgrade &amp; New Water Meter Projects</i>	3
<i>Sewer Project</i>	
<i>Pittsford Seniors Luncheon Listers</i>	4
<i>Lothrop School Directors</i>	
<i>Pittsford Recreation Family Fun Night</i>	5
<i>Teen Nights</i>	
<i>Pittsford Day Committee Kickboxing &amp; Aerobic</i>	
<i>Skis &amp; Snowshoes</i>	
<i>Baseball/ Softball</i>	
<i>Trail Network</i>	
<i>Maclure Library</i>	6
<i>Red Cross Blood Drive</i>	
<i>Pittsford Food Shelf</i>	7
<i>Historical Society</i>	
<i>Town Website</i>	
<i>Newsletter Deadline</i>	8
<i>Dates to Remember</i>	
<i>Dog Licenses Due 4/1/11</i>	

**SCHOOL BREAK FUN DAY: (Pre 1st—6th Grade)**

Does your child have cabin fever? Would you like to give your child something productive to do during the February Winter Vacation? Have your child join the Pittsford Recreation Department for a very cool field trip. The first part of the day, the group will enjoy indoor climbing w/Steve & his staff at the Green Mountain Rock Climbing Center in Rutland. There they will learn the proper techniques it takes to be a safe and reliable climber. After a morning of invigorating exercise, our group will go to VAC (Vermont Achievement Center) to indulge in an afternoon of swimming. Under the watchful eye of Kathy Corey, our participants will enjoy open swim time in the heated Mitchell Therapy Pool! Call early. This program was FILLED last winter!

**DATE: Wednesday, February 16, 2011 TIME: 10:00 am – 3:00 pm**

**WHERE: Green Mt. Rock Climbing Ctr./VAC Mitchell Pool FEE: \$21**



**9th ANNUAL WINTER CELEBRATION 2011**

Join the Pittsford Recreation Department and the Pittsford Trails Committee for the 9<sup>th</sup> Annual Winter Cross Country Skiing, Snow Shoeing & Sledding event. Enjoy guided tours and great snow conditions with family and friends. There will be a bonfire, hot chocolate and tasty treats for all to enjoy.

**WHEN: TBA WHERE: TBA**

**TIME: TBA FEE: Free, Free, Free...**

**CHECK ON THE TOWN'S WEBSITE FOR UPDATED INFORMATION OR CALL RANDY ADAMS, RECREATION DIRECTOR, 483-6500 EXT 17. [www.pittsfordvermont.com](http://www.pittsfordvermont.com)**



## FY2011/2012 BUDGET SUMMARY

### GENERAL FUND REVENUE

Account	Budget FY10	Actual FY10	Budget FY11	Budget FY12
TAXATION	973,613	811,925	975,613	970,613
FEES/PERMITS & LICENSES	30,400	37,803	29,645	35,760
INTERGOVERNMENT REVENUE	35,600	78,004	37,800	66,675
SOLID WASTE/CHARGES FOR SERVICES	82,550	62,356	83,000	67,575
MISCELLANEOUS RECEIPTS	36,425	27,896	32,725	28,025
RECREATION REVENUE	40,130	39,159	38,610	37,560
ANIMAL MANAGEMENT REVENUE	4,675	5,496	4,900	5,100
CONSTABLES	14,200	4,800	15,300	10,300
FIRE DEPARTMENT REVENUE	0	7,360	0	0
<b>TOTAL GENERAL FUND REVENUE</b>	<b>1,217,593</b>	<b>1,074,797</b>	<b>1,217,593</b>	<b>1,221,608</b>

\*Actual FY10 Total differs due to rounding

### GENERAL FUND EXPENSE

Account	Budget FY10	Actual FY10	Budget FY11	Budget FY12
LEGISLATION	9,500	9,582	9,400	10,200.00
MANAGEMENT	100,543	102,248	108,840	110,550.00
ELECTIONS	4,150	2,378	5,500	5,500.00
FINANCE	63,051	66,928	77,470	78,100.00
ADMINISTRATION	99,042	102,936	100,755	100,800.00
BOARDS AND AGENCIES	39,067	76,868	45,570	37,075.00
PLANT AND EQUIPMENT	57,713	42,267	36,700	38,300.00
FIRE WARDEN	1,620	2,393	1,900	2,550.00
MISCELLANEOUS	6,250	4,076	8,350	4,350.00
LISTERS'	51,556	43,157	49,685	49,000.00
HEALTH OFFICER EXPENSES	2,050	750	2,050	1,050.00
SPECIAL APPROPRIATIONS	100,569	100,569	109,834	109,834.00
SOLID WASTE/RECYCLING	120,095	106,696	116,809	111,500.00
WATER HYDRANT EXPENSE	22,360	22,360	22,360	22,360.00
CONSTABLES DEPARTMENT	83,655	86,991	87,850	79,950.00
FIRE DEPARTMENT	172,002	171,601	167,000	175,084.57
RECREATION DEPARTMENT	114,497	118,696	121,120	106,370.00
ANIMAL MANAGEMENT	7,471	6,155	6,655	7,160.00
RUTLAND COUNTY TAX	33,000	27,305	23,810	28,000.00
EMPLOYEE BENEFITS & INS	129,402	106,164	125,200	143,874.43
<b>TOTAL GENERAL FUND EXPENSES</b>	<b>1,217,593</b>	<b>1,200,120</b>	<b>1,226,858</b>	<b>1,221,608.00</b>

## WATER PROJECT AND NEW WATER METERS

The water system upgrade is nearly complete. The Pittsford and Florence systems have been combined, service has been improved around Town and new meters have been installed in virtually all water customer locations. The latest water bills have gone out which reflect actual usage for the first time in memory for many customers, together with a water project debt service component. Payment is due for the water and sewer bills Monday, March 7, 2011.

### Important Notice re Water Bills

The utility bills that went out at the end of January, 2011 reflect meter readings for three months of usage, between September and December, 2010, because only in September, 2010 were virtually all meters installed, enabling a Town-wide read.

To understand the way the metered water usage amount on your bill is figured, one can perform a few simple calculations:

1. Double the total consumption figure (a three month total this billing cycle)
2. Subtract the 6,000 gallon base allotment
3. The result is the 6-month metered usage beyond the base allotment
4. Multiply this figure by .0055 (\$5.50/1,000 gallons) to arrive at the metered water charge for this 6-month billing cycle.

In the next billing cycle, the meter readings will cover a full six months, and no such calculations will be necessary to fully understand your bill.

Thank you. Please direct any questions to the Office of the Town Manager at 483-6500 x20.

### Conservation Tips

The new meters have been installed, and you should have received your first water bill by now. Please note, as we collect more data, the water rate structure will be evolving. The Water & Sewer Commission is working on this issue, and hopes to stabilize rates once more usage data has been collected. Water is an essential resource to our way of life, and it is required for us to carry on our day to day activities. Here are several ideas to help you conserve water.....

-If your shower fills a one-gallon bucket in less than 20 seconds, replace the showerhead with a water-efficient model.

-When washing dishes by hand, don't let the water run while rinsing. Fill one sink with wash water and the other with rinse water.

-Some refrigerators, air conditioners and ice-makers are cooled with wasted flows of water. Consider upgrading with air-cooled appliances for significant water savings.

-Run your clothes washer and dishwasher only when they are full. You can save up to 1,000 gallons a month.

-Use the garbage disposal sparingly. Compost vegetable food waste instead and save gallons every time.

-For cold drinks keep a pitcher of water in the refrigerator instead of running the tap. This way, every drop goes down you and not the drain.

-Water your lawn and garden in the morning or evening when temperatures are cooler, to minimize evaporation.

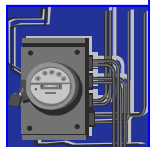
-Wash your fruits and vegetables in a pan of water instead of running water from the tap.

-Use a broom instead of a hose to clean your driveway and sidewalk.

### Website Links that explain how one can calculate water usage and how much water may be lost due to different types of leaks:

<http://www.csgnetwork.com/waterusagecalc.html>

<http://www.gdrc.org/uem/water/drip-calculator.html>



## SEWER PROJECT

With USDA loan and grant funding in place, work has begun at the Wastewater Treatment Facility to address problems identified by the State and the Town's engineers with regard to the chlorination of effluent and the pumping of sludge. In the spring, work will begin to replace the sewer lines and a pump station believed to be the main culprits in terms of groundwater infiltration into the sewage collection system.

## Pittsford Senior Group Luncheon Menu 2011

<u>Luncheon Date:</u>	<u>MENU:</u>	<u>MUST RSVP</u>
February 23, * <u>Wednesday</u>	Baked Chicken, Wild Rice Pilaf, Cherry Pie	Feb. 14
March 23, * <u>Wednesday</u>	Lasagna, Garlic Bread, Pound Cake w/Fruit	March 14
April 28	Roast Pork, Yams & Broccoli, Apple Crisp	April 19
May 19	Mac & Cheese, Veg. Beef Soup, Pumpkin Citrus Bars	May 10
June 23	Meatloaf & Twice Baked Potatoes, Choc. Cream Pie	June 14
July 28	BBQ (Chicken, Hamburgers, Hot Dogs) Baked Beans, Cole Slaw & Tapioca w/Fruit	July 19

**A fresh salad bar is included. All foods are homemade, including the soup, bread, and desserts.**

Suggested donation of \$4.50 for 60 and up. Must pay \$6.00 if under age 60.

Reservations are Necessary! All luncheons are on Thursdays, unless otherwise posted, at 1:00PM at the Vermont Police Academy in Pittsford. RSVPs & questions contact Randy Adams 483-6500 ext 17 or [Rsadams11@myfairpoint.net](mailto:Rsadams11@myfairpoint.net)



### PITTSFORD SENIORS

Senior citizens of Pittsford have organized a senior group. Pittsford Seniors meet at the Maclure Library on the 1st Friday of each month at 10:00 am. All seniors in the Pittsford area are invited and encouraged to attend. Come and bring your ideas! Any questions call Randy Adams at the Town Offices 483-6500 ext.17 or email him at [Rsadams11@myfairpoint.net](mailto:Rsadams11@myfairpoint.net).

### LISTERS

With respect to filing the Homestead Declaration (HS 122), please note that there is no longer an annual filing requirement. The declaration filed in 2010 remains in effect until the property is sold or the use of the homestead changes. New residents to Vermont would have to make an initial filing.

Pittsford's CLA (Common Level of Appraisal) effective January 1, 2010 is 95.09%. The CLA is the ratio of arms length sales to assessments and is used to establish assessment equity between towns. (Examples of non-arms length transactions would be transfers through foreclosure or to a family member). Pittsford's COD (Coefficient of Dispersion) effective January 1, 2011 is 15.05%. The COD measures assessment equity within a town; a COD of 10% or lower is considered to reflect a relatively high level of equity across taxpayers' assessments. If our Town's COD reaches 20% the State could order a Town wide assessment. Pittsford's CLA is in good shape. It's the COD that needs a watchful eye.

Town property tax maps are updated annually. If the size or shape of your property has changed due to a new survey, please have the survey recorded with the Town Clerk.

The Listers office is open Monday through Thursday from 9:00AM to 1:00PM. All other times by appointment. The office is staffed by 3 elected Listers and a part-time Secretary. If you have questions, want to make an appointment, or obtain a copy of a Lister's Card, call 802-483-6500 x 15.

Board of Listers: Jack Rogers, Chair; Dave Chapman; Robert Harnish Secretary: Linda Trask



### LOTHROP SCHOOL DIRECTORS

*Austerity* is a word that could characterize the winter landscape in Vermont. Covered in a blanket of white, details disappear and the countryside appears severely simple and unadorned. According to TIME Magazine the word *austerity* is becoming a watchword for corporations, schools and governments worldwide who are tightening their belts and cutting budgets in response to the harsh economic climate.

School Boards across the state of Vermont were given the task of cutting roughly 2% of their proposed 2011-2012 budgets. This challenge is made more difficult as schools need to respond to the ever-changing educational and social needs of their student bodies as well. This involves cooperation, commitment, and continuing education of the faculty, staff and School Board.

Thanks to the efforts made behind the scenes by our administration and RNESU business manager, we will be presenting a budget that is fiscally, educationally and socially responsible. No jobs have been eliminated and we are still maintaining all of our excellent educational programs and initiatives. The proposed budget for the 2011-2012 school year is \$3,561,874.00 which represents more than a 3% decrease over last year's proposed budget of \$3,684,313.00. Based on projections from the state using the current funding formula, this reduction may also provide a decreased tax payment for residents.

In addition to presenting the taxpayers with a reduced budget, we are looking for ways to rollover future surplus funds that would allow our after school program to become more self-sustaining and to build up our building maintenance reserve fund so we can meet future repair costs easier.

According to most experts there is little change in the economic outlook as we enter 2011; however, by working together and continuing to tighten our economic belts we can meet future challenges. We welcome your input and invite you to the School Board meetings held the first Tuesday of every month at 6:30 p.m. in the Lothrop Elementary School library.

## PITTSFORD RECREATION DEPARTMENT EVENTS

### FAMILY FUN NIGHTS

The Pittsford Recreation Department, the Maclure Library, and the Lothrop PTO are teaming up again to offer FAMILY FUN NIGHTS during the winter months. Each Fun Night is full of fun, which includes art and crafts, physical activities, and entertainment. Don't miss out.

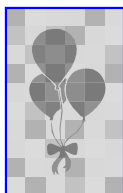
**DATE:** Friday, March 4 **Dr. Seuss' Birthday**

**LOCATION:** VT POLICE ACADEMY

Activities are intended for children 3<sup>rd</sup> grade or younger. Older siblings are invited to attend, but we will ask them to help with activities & crafts.

**TIME:** 6:30 – 8:00 pm

**FEE:** Free



### TEEN NIGHTS (GRADES 7-10)

Teen Nights are a great way for young people in the Pittsford & Brandon communities to get together in a fun and safe environment. Each "Teen Night" event is chaperoned by parents & volunteers. Fee: \$3 per person

February 11th Valentine Teen Dance

April 22nd Spring Fling Teen Dance

Time: 7-10 PM at Vermont Police Academy



### CARDIO-KICKBOXING & AEROBIC WORKOUT

This one-hour workout incorporates aerobic conditioning, strength & leg training and abdominal work. The cardio-kickboxing portion is a dynamic, low/high impact aerobic workout combining boxing techniques that strengthen the upper and lower body, with punches, jabs, and kicks.

**WHEN:** EVERY TUESDAY EVENING

**WHERE:** Lothrop Gym **TIME:** 5:30 – 6:30 pm

**FEE:** \$6 per class (pay as you go) or \$20 for 4 weeks

**INSTRUCTOR:** Joani Imperato

**BRING:** A mat or towel to lay on and wear comfortable clothes.

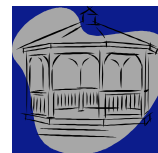


### PITTSFORD DAY COMMITTEE

The Pittsford Recreation Department and the Pittsford Day Committee are currently looking for volunteers to join the Pittsford Day Committee. Starting in January, the Committee meets once or twice a month usually from an hour to an hour and a half each meeting up until the event in Summer 2011. The Committee is in charge of planning the day's activities, scheduling entertainment, etc...

Please contact Recreation Director, Randy Adams at 483-6500 ext. 17 or

[Rsadams11@myfairpoint.net](mailto:Rsadams11@myfairpoint.net) to volunteer. Your help will be appreciated. Thank you.



### SKIS AND SNOWSHOES NOW AVAILABLE

The Lothrop School currently has 15 cross-country ski sets (boots, poles, and skis) of assorted sizes for students. Lothrop School also has 10 pairs of snowshoes for 4<sup>th</sup>, 5<sup>th</sup>, and 6<sup>th</sup> graders.

We are making these available for use free of charge over weekends and vacations. Skis and snowshoes cannot be transported on the buses. Parents need to be responsible for picking up and returning the equipment.

To use the equipment contact **Randy Adams**, Recreation Director (483-6500 ext. 17) or **Tim Rand** at Lothrop School (483-2242).



### YOUTH BASEBALL/SOFTBALL REGISTRATION

Registration for any boy or girl who is interested in playing T-Ball, Mighty Mites, Minors and Majors Little League, or Girls Softball this spring can be done with the Recreation Director at the Pittsford Municipal Offices Monday – Friday beginning March 1st. Registration forms will be ready and sent home through Lothrop Elementary School by the end of February. **The last day to register is**

**Thursday, March 31, 2011!**



### *New Program!!! Attention Walkers, Hikers, & Snowshoe users- Guided walks on the Pittsford Trail Network*

How would you like to enjoy a beautiful afternoon exploring one of the many trails that Pittsford has to offer? Members of the Pittsford Trails Committee have come up with an idea to offer guided walks. This will be a fantastic way for you to be introduced to the Pittsford Trail Network & a fun way to get some exercise, and meet some new friends.

If you're interested simply call the Recreation Department at 483-6500ext.17 to make your reservation that's convenient for you and the guide.

## MACLURE LIBRARY

Come Read With Us!



### Armchair Travelers

Virtual vacations. Let the library be your passport to adventure as community members share photos and traveling experiences from various locales around the world. Do you have a wonderful trip you would like to share with your neighbors? Call to schedule an evening. 483-2972.

**Russia/Finland** - February 15, 7:00 p.m. - Travel up the Volga River and on to Finland by train with Bonnie Stewart.

**Indo-China** - March 15, 7:00 p.m. - Experience Don and Shirlee Nickless' latest amazing journey.

**Mongolia** - March 29, 7:00 p.m. - Rutland High student, Rachel Munroe shares photos and amazing stories from her travels with the School for International Training.

### Annual Lego Building Contest

Calling all aspiring Lego builders! Join our Annual LEGO Contest!

Judging and prizes held on Friday, February 18, 6:00 p.m.

Enter in one of the following three categories: Ages up to kindergarten, Grades 1-3, Grades 4-6

Prizes for: Best in Show, Most Original, and first, second and third in each age group

Creations must be entirely original. Complete guidelines and entry forms are available at the Maclure Library or for more information call 483-2972

### February Book Discussion

Thursday, February 24, 7:00 p.m. - *Life Is So Good: One Man's Extraordinary Journey through the 20th Century and How he Learned to Read at Age 98* by George Dawson.

From Dawson's eloquent words, co-writer Glaubman, a Seattle elementary school teacher, has fashioned two engrossing stories. First is the inspiring saga of how someone who was the grandson of a slave managed to navigate the brutally segregated small Texas town of Marshall, where Dawson was born, without losing his integrity or enjoyment of life. The second theme running through these recollections is the institutionalized racism of the American South and the entrenched discrimination that excluded him from good jobs and "white" restaurants and rest rooms. This is an astonishing and unforgettable memoir.

### March Book Discussion

Tuesday, March 8, 7:00p.m. - *Girl with the Dragon Tattoo* by Stieg Larsson.

In *Girl with the Dragon Tattoo*, cases rarely come much colder than the decades-old disappearance of teen heiress Harriet Vanger. This widely popular book and first of a trilogy introduces a provocatively odd couple: disgraced financial journalist Mikael Blomkvist, freshly sentenced to jail for libeling a shady businessman, and the multipierced and tattooed Lisbeth Salander, a feral but vulnerable superhacker. Hired by octogenarian industrialist Henrik Vanger, who wants to find out what happened to his beloved great-niece before he dies, the duo gradually uncover a festering morass of familial corruption. Books are available at the library, call to reserve.

### Links to Literacy Golf Tournament

Mark your calendar - our annual golf tournament will be Friday, May 6. This is our major fundraiser for the year. By participating in our tournament, friends like you help to keep our community connected to information and each other.

### Story Hour

Toddler Time Story Hours are Thursday mornings at 10:00 a.m. Join us for a fun hour of stories, craft and snack.  
Look forward to seeing you soon.

## RED CROSS BLOOD DRIVE

**THE RED CROSS IS HOSTING A BLOOD DRIVE TUESDAY, APRIL 12TH AT THE LOTHROP SCHOOL FROM 12:00 TO 5:00 PM. TO MAKE AN APPOINTMENT, GO TO [WWW.REDCROSSBLOOD.ORG](http://WWW.REDCROSSBLOOD.ORG) OR CALL: 1-800-RED-CROSS.**



## PITTSFORD FOOD SHELF

SERVING PITTSFORD, PROCTOR &  
FLORENCE

Thank you all for helping us meet the needs of our neighbor's in 2010. What an incredible year and your generosity was a true blessing. Numbers were up. In fact we served 5158 people over a 12 month period. This equates to 95 families or 355 people per month. Why are the numbers so high? Individuals have lost their jobs, individuals' hours have been cut, families/individuals have high medical bills, low income or what ever else can cause a shortfall.

Pittsford versus Proctor at Town Meeting and the voting sites. Who will win this year? Bring a donation to either the meeting or voting sites and see who will win. Last year Pittsford won by the hair of their chinny -chin -chin.

Pittsford Food Shelf is gearing up for our annual capitol campaign – Feinstein Million Dollar Food Challenge. This challenge will be March and April. Be watching your mail boxes for more information.

Do you have an idea how we can raise money for the Food Shelf? If so give Robin a call. She is always looking for new ideas to make our program better

Did you know **94%** of your donations went into buying food, the other 6% was administrative, insurance.

Did you know that there is a local farmer who is providing quality beef to the Food Shelf at a reasonable price?

Did you know that the Food Shelf is going on its 5<sup>th</sup> year at Keith's Country Store.

Planning a garden? Maybe plant an extra row for the Food Shelf.

We must keep in mind that at one time or other we all will have a need for food. Hunger doesn't care what type of car you drive, the house you live in, your current income level or your health. Reality is that we are all one step away from having some type of need. Hunger is one need that we can't sweep under the carpet. It is easy to judge those in need but I ask before you judge others maybe ask yourself "If I lost my job tomorrow due to layoff or sickness for an extended period of time – how would I handle that situation?"

Items needed: Jello, puddings, canned soups, veggies & fruits, pastas, crackers, cereals, (both hot & cold), tuna fish, peanut butter & jelly and personal items i.e. toothpaste, soap, shampoo & conditioner etc. **Please note:** When cleaning out your cupboards, please check the expiration dates. If an item is older that one year it is no longer acceptable.

Thanks to all the volunteers who put so many hours in. If anyone is interested in joining our team, feel free to give Robin a call at 483-2967.

Submitted: Robin Rowe, Director, Pittsford Food Shelf

## PITTSFORD HISTORICAL SOCIETY

2011 officers and trustees elected at the 2010 annual meeting are: President Ernie Clerihew; Vice President Melanie Clerihew; Recording Secretary Rebecca Davenport; Corresponding Secretary Jane Welch; Treasurer Barbara Poljacik. Trustees: Peggy Armitage, Ernie Brod, Doris Hoare, and Immediate Past President Bob Welch. Plans for 2011 activities will be set at the Board's first meeting in January.

Melanie Clerihew intends to continue Junior History Club activities for Lothrop School 3rd and 4th graders, meeting at the Museum on Fridays after school or Saturdays through the remaining school year. Melanie urges interested third and 4th grade parents to call her at 483-6871 for details.

Treasurer Barbara Poljacik reports that, thanks to \$4,052 approved by Pittsford voters, we balanced the 2010 budget, which included repaving the parking lot. Sales of "Pittsford's Second Century 1872-1997" and our photo book, "Around Pittsford," helped replenish the publications fund.

We welcomed 12 new members in 2010 to make the total 174 including 27 life members, according to membership chair Doris Hoare. We invite anyone interested in Pittsford's history to become a member.

Curator Anne Pelkey calls Daniel Putnam Peabody II's recent gift of his history and genealogy of the Peabody family, copiously illustrated with vintage photos, one of the most comprehensive in our collections. If you would like to compile your family history, Anne can show you examples in the Museum.

Museum accessions from 2003 forward have been recorded in a Past Perfect computer program designed specifically for museums. Stephen Belcher is now transferring to the Past Perfect format our hand-written records from 2003 back to our founding in 1960. The location and description of objects and documents in our collections will all be available to researchers, and we will be able to answer e-mailed questions in greater detail.

2011 marks the 250th anniversary of the Town charter granted in 1761 by NH Royal Governor Benning Wentworth. We will look into celebrating the date with other Town organizations. Please leave your ideas and phone number ASAP on our answering machine at 483-2040.

**VISIT OUR TOWN WEBSITE!**

**WWW.PITTSFORDVERMONT.COM**

Pittsford Town Office  
P.O. Box 10  
426 Plains Road  
Pittsford, VT 05763

Bulk Rate #1  
US Postage  
PAID  
Pittsford, VT 05763

**Dates to Remember**  
**Town Clerk/Treas. Office**

**Water & Sewer Bills were mailed end of Jan. 2011. Payments due March 7, 2011.**  
**Town Municipal Office closed Monday, Feb. 21, 2011 (President's Day)**

**ANNUAL TOWN MEETING—Monday, February 28, 2011**  
LOTHROP SCHOOL GYM 6:30PM.

**GENERAL ELECTION—Tuesday, MARCH 1, 2011**  
POLLS OPEN 10AM—7PM  
MUNICIPAL TOWN OFFICE, 426 Plains Road, Pittsford

**FOOD DRIVE FOR THE PITTSFORD FOOD SHELF**  
WILL BE HELD **February 28 & March 1** AT THE TOWN MEETING & TOWN OFFICE—PLEASE BRING CANNED GOODS & NON PERISHABLES.  
THANK YOU—TOWN MANAGER, JOHN HAVERSTOCK

**DOG LICENSE REMINDER—DOG TAGS ARE IN.**  
DOGS ARE REQUIRED TO BE LICENSED EACH YEAR WITH THE TOWN BY **APRIL 1, 2011.** Don't wait until the last day. A RABIES CERTIFICATE IS REQUIRED.  
IF YOU HAVEN'T ALREADY REGISTERED YOUR DOG, PLEASE STOP BY THE TOWN OFFICE **BEFORE APRIL 1, 2011.** Fees are listed in the article at the right of this notice.

QUESTIONS CALL 802-483-6500 EXT. 11, 12, OR 13

**DOG LICENSES 2011**

Please note that dog licenses will be available at the Pittsford Town Office starting January 1, 2011. All dogs must be registered by April 1<sup>st</sup>. In order to register your dog, you must give the Town Office a copy of the most recent rabies vaccination certificate. Your veterinarian always gives you two copies, one for your files and one for our files. If you are unsure whether your dog's rabies certificate is up to date, please call your veterinarian or us at (802) 483-6500 Ext. 11, 12, 13, or 24.

The fees to register your dog(s) are as follows:

	Fee by April 1 <sup>st</sup>	Additional Fee After April 1 <sup>st</sup>
Female Spayed	\$8	\$2
Male Neutered	\$8	\$2
Female Not Spayed	\$12	\$4
Male Not Neutered	\$12	\$4
Kennel License	\$10	\$15

Please be aware that you may need a kennel license if you are: **"The owner or keeper of two or more domestic pets OR wolf-hybrids four months of age or older kept for sale or for breeding purposes"**.

*Deadline for the next Pittsford Newsletter will be **APRIL 15, 2011.** Please send Town articles to **Linda Drummond at drummondl@myfairpoint.net.***