

# Natural Resources *Pittsford* Map 1 of 2

POLITICAL BOUNDARIES: 1:24000 USGS Quadrangles, VCGI, 1991-2007.

ROADS & RAIL: VT Center for Geographic Information.

ELECTRIC LINES: VT Electric Power Company.

SURFACE WATER: Vermont Hydrography Dataset using 1:5,000 digital orthophotos, USGS 7 1/2' quadrangles and 1:20,000 color infrared aerial photography and other data sources.

WETLANDS: boundaries are derived from National Wetlands Inventory (NWI) and the Vermont Significant Wetland Inventory (VSWI) and are approximate. Wetlands less than three acres in size may not be shown. The wetlands depicted are those regarded as regulatory by the VT Water Resources Board.

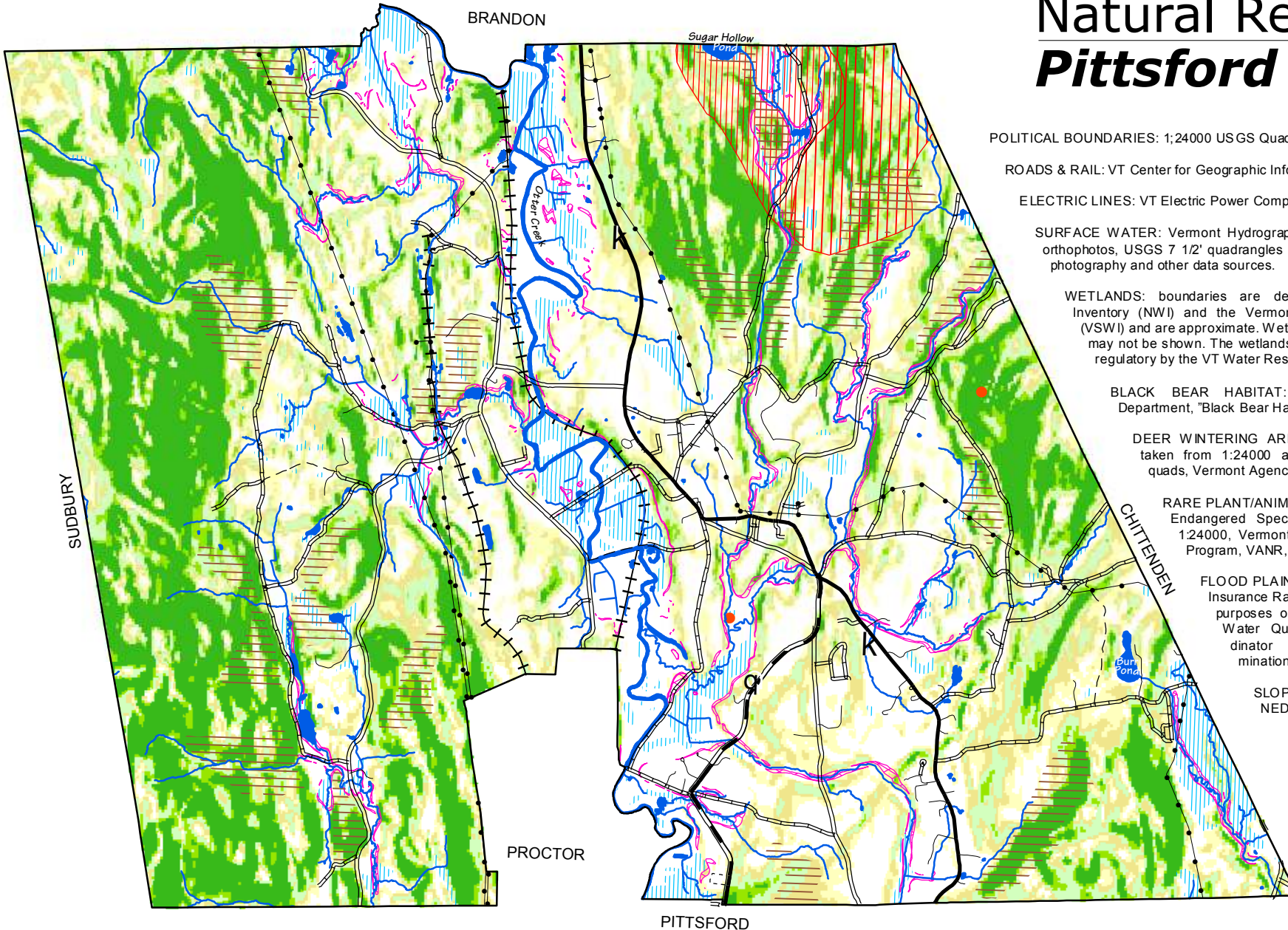
BLACK BEAR HABITAT: Vermont Fish and Wildlife Department, "Black Bear Habitat in Vermont, 1989"

DEER WINTERING AREAS: EcologicHabitat\_DEERWN, taken from 1:24000 and 1:25000 USGS topographic quads, Vermont Agency of Natural Resources, 1997.

RARE PLANT/ANIMAL SITES: Rare, Threatened and Endangered Species & Significant Communities, 1:24000, Vermont Nongame and Natural Heritage Program, VANR, 1997.

FLOOD PLAIN: DFIRM data from FEMA Flood Insurance Rate Maps. Floodplains for planning purposes only. Refer to the VANR\_DEC, Water Quality Division, Floodplain Coordinator for official floodplain determinations. (802) 241-3759.

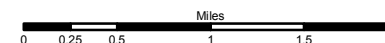
SLOPE: Slopes generated from USGS NED based 7.5' DEM24 data, 2002



- |                       |                    |                           |                     |
|-----------------------|--------------------|---------------------------|---------------------|
| — US Highway          | — Private Road     | ● Rare Plant/Animal Site  | ■ Slopes 6 - 10 %   |
| — State Highway       | - - - Other Road   | ■ Flood Hazard Areas      | ■ Slopes 10 - 14 %  |
| — Class 2 Town Road   | + Railroad         | ■ Wetland                 | ■ Slopes 14 - 20 %  |
| — Class 3 Town Road   | ● Electric Line    | ■ Deer Wintering Areas    | ■ Slopes 20 - 24 %  |
| - - Class 4 Town Road | ~ Rivers & Streams | ■ Bear Production Habitat | ■ Slopes Above 24 % |
| — State Forest Road   | ■ Lakes & Ponds    | ■ Seasonal Bear Habitat   |                     |



Copyright Rutland Regional Planning Commission  
This map (D:\RRPC\PITTSFRDIMAPS & PROJECTS\PitNatRes1A\_08.mxd) was produced on 2/25/09



Location Map

Map intended for planning purposes only.  
For more information, please contact:  
Rutland Regional Planning Commission  
The Opera House, Third Floor, PO Box 965  
Rutland, VT 05702 (802) 775-0871