

MUNICIPAL

OFFICE HOURS:

Mon. through Wed.

8-4:30

Thursday

8- 6

Friday

8-3

After Hours Use Drop Box at Exit



SCHOOL VACATION FUN DAY February 17, 2010

1st—6th Grade

Does your child have cabin fever? Would you like to give your child something productive to do during the February Winter Vacation? Have your child join the Pittsford Recreation Department for a very cool field trip. The first part of the day, the group will enjoy indoor climbing w/Steve & his staff at the Green Mountain Rock Climbing Center in Rutland. There they will learn the proper techniques it takes to be a safe and reliable climber. After a morning of invigorating exercise, our group will go to VAC (Vermont Achievement Center) to indulge in an afternoon of swimming. Under the watchful eye of Kathy Corey, our participants will enjoy open swim time in the heated Mitchell Therapy Pool! Call early, this FILLED last winter!

DATE: Wednesday, February 17, 2010 TIME: 10:00 am – 3:00 pm
 WHERE: Green Mt. Rock Climbing Ctr./VAC Mitchell Pool
 FEE: \$20



8th ANNUAL WINTER CELEBRATION 2010

Join the Pittsford Recreation Department and the Pittsford Trails Committee for the 8th Annual Winter Cross Country Skiing, Snow Shoeing & Sledding event. Enjoy guided tours and great snow conditions with family and friends. There will be a bonfire, hot chocolate and tasty treats for all to enjoy.

WHEN: Saturday, February 27th
 WHERE: Cadwell Trail of the Pittsford Trails Network
 (Located on Elm St. 0.6 miles from Kamuda's Market)
 TIME: 1:00 PM
 FEE: Free, Free, Free...



New Program!!! Attention Walkers, Hikers, & Snowshoe users- Guided walks on the Pittsford Trail Network



How would you like to enjoy a beautiful afternoon exploring one of the many trails that Pittsford has to offer? Members of the Pittsford Trails Committee have come up with an idea to offer guided walks. This will be a fantastic way for you to be introduced to the Pittsford Trail Network & a fun way to get some exercise, and meet some new friends.

If your interested simply call the Recreation Department at 483-6500ext.17 to make your reservation that's convenient for you and the guide.

<i>Fun Day</i>	1
<i>Winter Celebration</i>	
<i>Trail Network</i>	
<i>Budget Summary</i>	2
<i>Maclure Library</i>	3
<i>Lothrop School Directors</i>	
<i>Transfer Station</i>	
<i>New Town Website</i>	
<i>Pittsford Seniors Luncheon</i>	4
<i>AARP Safe Driver</i>	
<i>WalkRutland Challenge</i>	
<i>Elders on the Go</i>	
<i>Pittsford Recreation</i>	5
<i>Family Fun Night</i>	
<i>Teen Nights</i>	
<i>Pittsford Day Committee</i>	
<i>Kickboxing & Aerobic</i>	
<i>Skis & Snowshoes</i>	
<i>Baseball/ Softball</i>	
<i>Fire Dept.</i>	
<i>Pittsford Historical Society-</i>	6
<i>Water & Sewer News</i>	
<i>Listers</i>	
<i>VLCT-Wellness program</i>	
<i>Pittsford Food Shelf</i>	7
<i>Pittsford Community Corp</i>	
<i>Town Plan Adoption</i>	
<i>Pittsford Business Community</i>	
<i>Newsletter Deadline</i>	8
<i>Dates to Remember</i>	
<i>Rutland Humane Society</i>	

FY2010/2011 BUDGET SUMMARY				
	GENERAL	FUND	REVENUE	
	Budget FY09	Actual FY09	Budget FY10	Budget FY11
TAXATION	936,418	1,300,292	973,613	975,613
FEES/PERMITS & LICENSES	27,075	27,865	30,400	29,645
INTERGOVERNMENT REVENUE	29,800	56,527	35,600	37,800
FEE/CHARGE FOR SERVICES	66,000	54,056	82,500	83,000
MISCELLANEOUS RECEIPTS	23,200	30,190	36,425	32,725
RECREATION REVENUE	39,125	31,694	40,130	38,610
ANIMAL MANAGEMENT REVENUE	4,300	5,125	4,675	4,900
CONSTABLES	18,100	13,302	14,200	15,300
TOTAL GENERAL FUND REVENUE	1,144,018	1,524,846	1,217,593	1,217,593
	GENERAL	FUND	EXPENSE	
	Budget FY09	Actual FY09	Budget FY10	Budget FY11
LEGISLATION	10,000	7,915	9,500	9,400
MANAGEMENT	97,693	100,446	100,543	108,840
ELECTIONS	3,900	6,048	4,150	5,500
FINANCE	58,056	65,535	63,051	77,470
ADMINISTRATION	92,755	85,800	99,042	100,755
BOARDS AND AGENCIES	39,285	57,585	39,067	45,570
PLANT AND EQUIPMENT	37,661	34,706	57,713	36,700
FIRE WARDEN	1,346	1,528	1,620	1,900
MISCELLANEOUS	7,300	3,861	6,250	8,350
LISTERS'	50,500	26,432	51,556	49,685
HEALTH OFFICER EXPENSES	10,750	10,750	10,750	2,050
SPECIAL APPROPRIATIONS	100,469	100,469	100,569	0
SOLID WASTE/RECYCLING	118,730	111,391	120,095	116,809
WATER HYDRANT EXPENSE	22,360	22,360	22,360	22,360
CONSTABLES DEPARTMENT	81,286	89,423	83,655	87,850
FIRE DEPARTMENT	168,220	168,075	172,002	167,000
RECREATION DEPARTMENT	105,354	111,369	114,497	121,120
ANIMAL MANAGEMENT	7,002	4,600	7,471	6,655
RUTLAND COUNTY TAX	30,600	27,668	33,000	23,810
EMPLOYEE BENEFITS & INS	109,251	93,279	129,402	125,200
TOTAL GENERAL FUND EXPENSES	1,144,018	1,120,497	1,217,593	1,117,024
FY2010/2011 BUDGET SUMMARY - HIGHWAY FUND REVENUE				
	Budget FY09	Actual FY09	Budget FY10	Budget FY11
HIGHWAY ACCESS PERMIT	700	110	250	250
PROPERTY TAXES	813,663	813,663	822,171	822,171
STATE AID - CL 2 & 3 ROADS	120,000	117,551	100,000	100,000
GRANT REVENUE	0	359,856	0	0
OVERLOAD PERMITS	250	445	500	500
FEMA REVENUE	0	0	0	0
E-911 STATE GRANT	0	0	0	0
INTEREST INCOME	0	5,394	10,000	10,000
TOTAL HIGHWAY REVENUE	934,613	1,364,824	932,921	932,921
	HIGHWAY	FUND	EXPENSE	
GENERAL	162,285	175,288	180,907	160,085
CLASS II MAINTANENCE	131,500	46,621	192,900	218,000
CLASS III MAINTENANCE	275,300	239,391	149,000	167,500
WINTER MAINTENANCE	181,000	157,407	204,000	198,000
BRIDGES AND GUARDRAILS	42,900	10,974	68,587	56,000
SPECIAL PROJECTS	6,000	620,705	26,000	6,000
DEBT SERVICE	135,628	135,628	131,527	127,336
TOTAL HIGHWAY FUND EXPENSES	934,613	1,386,014	952,921	932,921



MACLURE LIBRARY

Come Read With Us!

Our next read is *The Reluctant Fundamentalist* by Mohsin Hamid on Tuesday, February 9 at 7:00 p.m. "I am a lover of America," the young Pakistani narrator of this lucid, unsettling novel begins. In the course of a single day and night, he divulges to a mysterious and possibly menacing American his love affair with this country: embraced first by Princeton, then by a New York firm of business analysts, and finally by the beautiful daughter of a patrician Upper East Side family. Throughout his brilliant trajectory, however, he is troubled by the easy, almost insolent sense of superiority in his American peers, who take for granted their status as sons of empire. Only in the wake of the September 11th attacks, when America's wrath turns toward his homeland, does he realize that he has become a latter-day janissary—akin to the children of defeated nations who, conscripted in the army of the enemy, "fought to erase their own civilizations." Books are available, call 483-2972 to reserve yours.

Family Programs

Family Fun Nights –

Friday, February 5, 6:30 - 8:00 p.m. – *Barnyard Dance*

Friday, March 12, 6:30 - 8:00 p.m. – *The Wild, Wild West*

*Programs held at the Pittsford Police Academy. Activities are intended for children in 3rd grade and younger. Older siblings are invited to attend, but we will ask them to help us with the activities and crafts.

Maclure Library's Second Annual Lego Building Contest

Calling all aspiring Lego builders! It's time for the Second Annual LEGO Contest. Bring your Lego creations to the library on Wednesday, February 17. Judging and prizes will be held 6:00 p.m. Friday, February 19. Creations must be entirely original. Prizes for: Best in Show, Most Original, 1st, 2nd, 3rd in age group. Enter in one of the following three categories: Ages up to kindergarten, Grades 1-3, Grades 4-6. Complete guidelines and entry forms are available at the Maclure Library or for more information call 483-2972.

Listen up Vermont and Netlibrary

We've added a new audio collection for our patrons – NETLIBRARY. Access a diverse collection of audio titles spanning fiction and non-fiction from foreign language to mysteries. You will need to contact the library for a password, but other than that, it's easy! Books can be downloaded to a computer from home or the library and then transferred to supported portable devices, such as MP3 players, and many titles can be burned to CD.

Vermont Online Library

A one-stop source for news and periodical articles on a wide range of topics: business, current events, economics, education, health care, literature, art and science with millions of full-text articles, many with images. Call for your access password.

Heritage Quest Online

Call for your password to visit this resource for census data, family records and local histories. This collection assembles every extant U.S. federal census, banking and military records, genealogies, local histories, primary source materials, and genealogical and local history serials.

Consumer Reports

Call for your password to visit this online resource for valuable buying advice, product reliability data, and scientific tests and ratings of thousands of products every year.

Remember to keep an eye out for our sidewalk sign for upcoming events. If you are interested in e-mail notification of library events, please call 483-2972 and we will add you to our list.



LOTHROP SCHOOL DIRECTORS

Winter means snow here in Pittsford. We love the snow, because it's beautiful and lends itself to making Pittsford even more picturesque after the leaves have gone. I hear snowmobiles in the distance, skiers head to the slopes, children laughing making snowmen.

At Lothrop, it's budget time. Sure as snow, the Board prepares a budget that we hope will meet your approval. We will continue to work hard making tough decisions, accounting for efficiencies where they exist and ask for those things that will make a difference to students, teachers, and you.

And in some ways, the Board tries to be a good forecaster. Like the weatherman, we try to predict changing patterns and be as accurate as possible in our predictions. We recognize that we aren't necessarily controlling the weather, but try to plan according to the weather.

We're hoping that you'll trust us as much as the weatherman to help forecast a good budget this year. There are aspects that we have in our control, but some that we do not. We will hope you'll come down to Town Meeting and listen to our presentation

While it's the shoveling that might get us a bit cranky in the winter, I'm sure the sun will always shine on the "Sunshine Village."

See you soon and we look forward to the Town of Pittsford supporting our children's future through their education today.

On behalf of the Pittsford School District Board of Directors, Stay warm! Chuk Pitts

TRANSFER STATION

As you may know, Pittsford's Transfer Station Ordinance provides for a \$2.00 charge for each garbage bag up to 33 gallons in size. If any residents dump larger bags or mis-declare to the attendant the number of bags being brought in, the result is lost revenue and a growing imbalance between revenues and the expense to dispose of the collected garbage/recyclables. In an effort to minimize losses at the Transfer Station, and keep property taxes as low as possible, enforcement of the Ordinance will be tightened, by Order of the Town Manager.



PITTSFORD'S NEW WEBSITE

The Town of Pittsford is pleased to report that its new website is up and running and anxious to make the acquaintance of your computer, laptop, blackberry, whatever....Check it out at www.pittsfordvermont.com



Pittsford Senior Group Luncheon Menu 2010

<u>Luncheon Date:</u>	<u>MENU:</u>	<u>MUST RSVP</u>
February 25 th	Baked Chicken, Wild Rice Pilaf, Cherry Pie	Feb. 16 th
March 25 th	Lasagna, Garlic Bread, Pound Cake w/fruit	March 16 th
April 22nd	Roast Pork, Yams & Broccoli, Apple Crisp	April 13 th
May 20 th	Mac & Cheese, Veg. Beef Soup, Pumpkin Citrus Bars	May 11 th
June 24th	Meatloaf & Twice Baked Potatoes, Choc. Cream Pie	June 15 th
July 22 nd	BBQ (Chicken, Hamburgers, Hot Dogs) Baked Beans, Cole Slaw & Tapioca w/fruit	July 13 th

A fresh salad bar is included. All foods are homemade, including the soup, bread, and desserts.

Suggested donation of \$4.50 for 60 and up. Must pay \$6.00 if under age 60.

Reservations are Necessary! All luncheons are on Thursdays at 1:00PM at the Vermont Police Academy in Pittsford. RSVPs & questions contact Randy Adams 483-6500 ext 17 or Rsadams11@myfairpoint.net



PITTSFORD SENIORS

Senior citizens of Pittsford have organized a senior group. Pittsford Seniors meet at the Maclure Library on the 2nd Friday of each month at 10:00 am. All seniors in the Pittsford area are invited and encouraged to attend. Come and bring your ideas! Any questions call Randy Adams at the Town Offices 483-6500 ext.17 or email him at Rsadams11@myfairpoint.net.

AARP SAFE DRIVER COURSE

The Pittsford Recreation Department will be sponsoring the AARP Safe Driver Course (formerly "55-Alive"). This 4-hour course is open to all drivers 50 years old and older. The curriculum addresses the normal physical changes brought on by the aging process, how these changes can affect driving ability and behavior & then offers ways to compensate for those changes. There are no tests and no grades.

WHEN: Thurs., June 3rd

TIME: 1:00 – 5:00 pm

WHERE: Pittsford Town Offices

FEE: \$14 (AARP members get a \$2 discount. An AARP membership number is needed at registration). **Pre-registration is REQUIRED for this course. Contact Randy Adams 483-6500 Ext. 17.**



WALKRUTLAND LAUNCHES 2010

WALKING CHALLENGE

WalkRutland, a program of the Rutland Area Physical Activity Coalition (RAPAC), is launching its latest walking challenge. The 100 miles in 100 days challenge is designed to encourage individuals to get out and walk one mile each day for 100 days. The program is free and open to all community members 18 years of age and older.

The challenge begins January 18, 2010 and ends April 27, 2010. The mileage can be measured by distance, pedometer steps (2,000=1 mile), or time 25 min.=1 mile), and as long as you complete 100 miles in 100 days, you can fulfill the challenge. If you miss the initial start date of January 18, you can still participate and qualify for completion as long as you walk 100 miles by April 27.

It's easy to participate. Each individual must sign up, keep a log of his or her mileage, and fill out a pre- and post-event survey. Participants will turn in their mileage logs and complete post-surveys by May 4 and are encouraged to attend the 100 Mile Celebration event to be held on Saturday, May 8, at Depot Park. All participants who complete the challenge will receive a T-shirt and qualify to enter a raffle for prizes. **Registration packets can be picked up at the Maclure Library in Pittsford and other libraries in Rutland County.** For detailed information on the challenge, please visit: www.walkrutland.com or www.rapac.infor. You may also contact Jen Coleman, WalkRutland Coordinator, at 802- 342-3479.

“ELDERS ON THE GO”

Elders on the Go will be taking a trip to the Middlebury Area on February 4, 2010 departing at 9:00 AM from the St. Alphonsus Catholic Church parking lot and returning at no predetermined time. The fee is \$1.50 donation. RSVPs must be called in to Helen Fowler at 483-2201 by January 28, 2010 to reserve your spot. Questions call Rec. Dept. 483-6500 ext. 17.

PITTSFORD RECREATION DEPARTMENT EVENTS

FAMILY FUN NIGHTS

The Pittsford Recreation Department, the Maclure Library, and the Lothrop PTO are teaming up again to offer three FAMILY FUN NIGHTS during the winter months. Each Fun Night is full of fun, which includes art and crafts, physical activities, and entertainment. Don't miss out.

DATES: Friday, February 5 BARNYARD DANCE
Friday, March 12 WILD, WILD WEST

LOCATION: VT POLICE ACADEMY

Activities are intended for children 3rd grade or younger. Older siblings are invited to attend, but we will ask them to help with activities & crafts.

TIME: 6:30 – 8:00 pm

FEE: Free



TEEN NIGHTS (GRADES 7-10)

Teen Nights are a great way for young people in the Pittsford & Brandon communities to get together in a fun and safe environment. Each "Teen Night" event is chaperoned by parents & volunteers. Fee: \$3 per person

February 12th Valentine Teen Dance

April 23rd Spring Fling Teen Dance

Time: 7-10 PM at Vermont Police Academy

In conjunction with the Brandon Rec. Dept.



CARDIO-KICKBOXING & AEROBIC WORKOUT

This one hour workout incorporates aerobic conditioning, strength & leg training and abdominal work. The cardio-kickboxing portion is a dynamic, low/high impact aerobic workout combining boxing techniques that strengthen the upper and lower body, with punches, jabs, and kicks.

WHEN: EVERY TUESDAY EVENING

WHERE: Lothrop Gym **TIME:** 5:30 – 6:30 pm

FEE: \$6 per class (pay as you go) or \$20 for 4 weeks

INSTRUCTOR: Joani Imperato

BRING: A mat or towel to lay on and wear comfortable clothes New sessions begin each month!

(Based on interest, program will run through May!)



PITTSFORD DAY COMMITTEE

The Pittsford Recreation Department and the Pittsford Day Committee are currently looking for volunteers to join the Pittsford Day Committee. Starting in January, the Committee meets once or twice a month usually from an hour to an hour and a half each meeting up until the event in Summer 2010. The Committee is in charge of planning the day's activities, scheduling entertainment, etc...

Please contact Recreation Director, Randy Adams at 483-6500 ext. 17 or

Rsadams11@myfairpoint.net to volunteer. Your help will be appreciated. Thank you.



SKIS AND SNOWSHOES NOW AVAILABLE

The Lothrop School currently has 15 cross-country ski sets (boots, poles, and skis) of assorted sizes for students. Lothrop School also has 10 pairs of snowshoes for 4th, 5th, and 6th graders.

We are making these available for use free of charge over weekends and vacations. Skis and snowshoes cannot be transported on the buses. Parents need to be responsible for picking up and returning the equipment.



To use the equipment contact **Randy Adams**, Recreation Director (483-6500 ext. 17) or **Tim Rand** at Lothrop School (483-2242).



YOUTH BASEBALL/SOFTBALL REGISTRATION

Registration for any boy or girl who is interested in playing T-Ball, Mighty Mites, Minors and Majors Little League, or Girls Softball this spring can be done with the Recreation Director at the Pittsford Municipal Offices Monday – Friday beginning March 1st. Registration forms will be ready and sent home through Lothrop Elementary School by the end of February.

**The last day to register is
March 31, 2010!**



The Pittsford Fire Department would like to Thank the entire Pittsford community for coming out to help with and support the 28th Haunted House in October, 2009. Without the countless volunteers and organizations, this annual fund raising for the Pittsford Fire Department would not be possible. Also Thank you for supporting the Pittsford Santa Fund.

PITTSFORD HISTORICAL SOCIETY



This year we will celebrate 50 years of collecting, preserving, publishing, and exhibiting Pittsford's history in the Museum at Eaton Hall. Although Eaton Hall is closed until late March, we welcome phone messages and respond to requests for information all winter. Leave a message at (802) 483-2040 or call Anne Pelkey, 483-6178 or Peggy Armitage, 483-2108.

Officers for 2010 are President Bob Welch; Vice President Ellen Garneau; Corresponding Secretary Rebecca Davenport; Recording Secretary Jane Welch; and Treasurer Barbara Poljacik. Trustees are Ernie and Melanie Clerihew, Ed Keith, Sr., and Immediate Past President Peggy Armitage.

Barbara Poljacik reports that we balanced our 2009 budget, thanks in large part to townspeople who approved a \$4,052 appropriation at Town Meeting, and to St. Alphonsus Church and the Lothrop School for giving us space at their holiday fairs. Sales of our books, "Around Pittsford" and "Pittsford's Second Century, 1872-1997," totaled over \$3,600, replenishing funds earmarked for future publications. The books are available at the Town Office, Maclure Library, Kamuda's Market, or by calling Barbara Poljacik, 483-6604.



We also thank those contributing to the \$4,800 fund to repave our parking lot in the spring. (Ed Keith Sr. is still accepting donations.)

These members volunteered as Sunday afternoon museum hosts last summer and fall: Clyde & Marie Walton, Harold & Mary Patch, Lois Blittersdorf, Kay Killoran, Betty Atwood, Anne Pelkey, Emerson & Jocelyn Frost, Jean Davies, Bill Powers, Ivy Dixon, Lucie Anderson, and Dave Sargent. This year, we encourage you to call Peggy Armitage about spending just three hours of one Sunday afternoon showing the exhibits and family files to visitors from all over the U.S. We'll show you the ropes, and you'll have a ball!

We welcome new members: David and Judith Petrie of Minnesota.

REMINDERS: Unheated basements & mobile homes need to have water meters insulated to prevent freezing pipes. This is the property owner's responsibility. Please do not park on sidewalks as the Town is unable to remove snow if they are blocked. Do not plow snow near fire hydrants or shovel or plow snow into the roads-it is against the law. Thank you for your cooperation. There is a winter sand pile by the fire station for residents personal use.



WATER & SEWER UTILITY NEWS

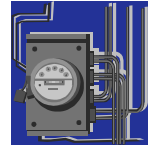
WATER SYSTEM UPGRADES

At the close of 2009, the Town can report on progress on the water system upgrade project as follows:

Markowski Excavating's work to install the cross-country connection main linking the Pittsford and Florence systems is nearly complete, with work now shut down for the season;

Work to improve service to customers on sections of the system most in need (for example, Route 7 from the Mobil station to the Rowe Apartments) will begin early in the spring;

All customers will soon be receiving a notice instructing them to contact the number listed to schedule a time for the installation of a new water meter by employees of Meter & Backflow Services. As Pittsford/Florence sells metered water, it is **IMPERATIVE** that all customers make the required call.



LISTERS

In September of 2009, Bob Harnish joined our staff of listers to complete the 3 person board. Our Listers are Jack Rogers, Dave Chapman, and Bob Harnish.

The Board has kept very busy inspecting and listing completed building permits and new construction which has added a considerable amount of value to our Grand List. We have also received our most recent Common Level of Assessment (CLA) from the State of Vermont. Our CLA is 95.09%. This high CLA indicates that we have a fair and equal assessment for all of our properties in Pittsford. This rating also keeps us away from having to have a new town wide assessment.

The Listers' office is open Monday through Thursday from 9:00 AM to 1:00 PM and all other times by appointment.

VLCT PRESS RELEASE—WELLNESS PAYS!

Municipal Health Insurance Program Returns Money to Members for Fourth Year in a Row and to Individuals for the First Time for Participation in the Healthy Lifestyle Rewards Program.

Montpelier, Vermont, December 21, 2009. In recognition of their participation in a wellness initiative, eighty-four (84) Vermont municipalities will soon receive checks from the association that insures them.

The Vermont League of Cities and Towns (VLCT) Health Trust will deliver just over \$288,000 in health insurance credits to the municipalities that successfully completed the fourth year of its Leader Program. Health Trust members will be credited for their wellness efforts in amounts up to \$22,000.

The VLCT Health Trust Board of Directors supports the Leader Program as a way to encourage and reward municipalities for their wellness activities. The VLCT Health Trust has 251 member municipalities and local government organizations and insures 5,500 municipal employees and their dependents.

Pittsford was a member town that participated in the Leader Program with 7 employees taking part. Pittsford received a check for \$1,050.00 for their participation.

PITTSFORD FOOD SHELF

Thank you all for a wonderful 2009. Thanks to all of you, we were able to meet the needs of our neighbors.

Now on to 2010. March 1st we will be kicking off the Feinstein Million Dollar Food Challenge. From March 1 thru April 30 will be our annual fundraiser. Help us meet our goal of \$25,000 (combination of food & money). Let's bring our communities together and challenge each other. Let's challenge our neighbors, church group or schools. Whatever will be fun and we can raise money/food, that's what we need to do. Can we count on you for this challenge? Be watching for more information.

In March we will begin to take names of families who are interested in the summer lunch program. Be watching for the sign up sheet at the Food Shelf.

Reminders: Commodity food pick up is the first Wednesday of each month from 10:00 – 11:00 AM at St Alphonsus Parish Hall. This is a drive thru process. This program is based on your income. Call Robin at 483-2967 for more information. We have two programs which I call "the bag program" (commodities – for everyone who qualifies) & "the box program" (Supplemental Commodities for elders over 60). We pass out food the first Wednesday of each month, rain, snow, sleet, hail, etc. The only time Commodities will be cancelled is if the truck from Barre can not make it here (which is very rarely).

Food Shelf is open Mondays 9-11; Tuesdays 1-3 & Thursdays 4-6. If you miss picking up your commodities the first Wednesday of each month, you can pick them up at the Food Shelf. As a reminder you must be a resident of Pittsford, Proctor or Florence to use the Food Shelf. You must provide proof of residency with a utility bill.



Our motto is people helping people and we hope we will be able to continue our service to our communities in 2010 with your help.

ITEMS NEEDED @ the Food Shelf: Brownie mixes, frostings, puddings & jellos, saltine crackers, paper items, personal items, laundry detergent & cleaning supplies and cereals. Robin Rowe, Director

***On March 1 & 2 at Town Meeting and Town Election Day, there is a Food Drive for the Food Shelf. Please bring your non-perishable food and canned goods to the Town Meeting or to the Town Municipal Office where there will be boxes available for the Food Drive. Thank you, Pittsford Town Manager**

TOWN PLAN ADOPTION

On Tuesday, January 7, 2010, the Pittsford Select Board adopted the Town Plan promulgated by the Town's Planning Commission, as written and presented at public hearings on January 6 and 7. The new Town Plan may be found on the Town's new website: www.pittsfordvermont.com. Many thanks to Commission members Don Nickless, Thor Konwin and Kathy Brown for their hard work on this important project.

PITTSFORD COMMUNITY CORPORATION

Many Pittsford residents generously shared their thoughts and took time to help the Pittsford Community Corporation (PCC) consider what the community would like to see on the Forrest Farm by participating in a focus group or filling out a survey.

While some participants would like to see the Forrest Farm remain untouched, the majority of those who shared their ideas felt that this is a logical site for some sort of mixed use development. Participants felt that if done correctly – paying attention to design, traffic and views – new development could strengthen the village center and add to the vitality of Pittsford Village. Of the ideas that were shared, those that rose to the top included:

- Coffee shop/bakery, Restaurant, Post office,
- Community center, Farmers market, Senior housing and
- Village green (with a gazebo)

The theme around these ideas was to develop some key focal points where the community can come together, meet, share ideas and develop more of a sense of unity as a community.

All these are wonderful ideas that would add to the vitality of the Village; however, participants realized that all of these ideas would require the community to come together to ensure project success-a daunting task. So in order to assist the community in thinking through various options we will be holding a community forum in February or March and bring in speakers from other communities to discuss how they have successfully developed similar projects in their towns. We also hope to have some illustrations of what these projects could look like on the site for people to comment and make further suggestions. We will let you know the date for this forum so you can be sure to put it on your calendar.

For further project details go to <http://tinurl.com/pittsford>. If you have any questions or would like to help PCC, please call Noelle MacKay, Exec. Director of Smart Growth Vermont, at 802-864-6310 or Baird Morgan, Pres. of PCC, at 483-6335.

Editor's Note: As a courtesy, the Town is affording space to the PCC to inform Town residents of its activities. Please note that the PCC speaks for itself and not for the Town of Pittsford.

PITTSFORD BUSINESS COMMUNITY

The Pittsford Business Community invites you to attend the February Mixer at The Hillside Market on Rt 7, Feb 1st at 5:30pm as well as our meetings Feb 8th and March 8th. All are welcome to attend. For more information check out our new web-sites: www.pittsfordbusinesscommunity.com & www.discoverpittsfordvt.com. Contact Charla for more information: 483-6686.

"Sunshine Village"

Pittsford Town Office
P.O. Box 10
426 Plains Road
Pittsford, VT 05763

Bulk Rate #1
US Postage
PAID
Pittsford, VT 05763

*Deadline for the next Pittsford Newsletter will be
APRIL 15, 2010. Please send Town articles to
Linda Drummond at drummondl@myfairpoint.net.*

**VISIT OUR NEW TOWN WEBSITE!
WWW.PITTSFORDVERMONT.COM**

It's "Spay the Mom" Season at the Rutland County Humane Society!

There's nothing cuter than kittens and puppies. . . until it's time to find homes for them. Let the Rutland County Humane Society (RCHS) help! Our program is simple and free: If you're a Rutland County resident, you can bring your mom cat or dog and her kittens or puppies to us at no charge. In exchange, the Humane Society will "Spay the Mom" and return her to you at no cost. The kittens and puppies will be adopted into loving new homes after being spayed and neutered. Please help spread the word if you know of a female cat or dog with kittens or puppies! For more information, please call the RCHS shelter at 802.483.6700.



Dates to Remember

Town Clerk/Treas. Office

Water & Sewer Bills mailed end of Jan. 2010.
Payments due March 1, 2010.
Town Municipal office closed Feb. 15, 2010

ANNUAL TOWN MEETING—Monday, **MARCH 1, 2010**,
LOTHROP SCHOOL GYM 6:30PM. School makes first
presentation.

GENERAL ELECTION—Tuesday,
MARCH 2, 2010 POLLS OPEN 10AM—7PM
MUNICIPAL TOWN OFFICE

FOOD DRIVE FOR THE PITTSFORD FOOD SHELF
WILL BE HELD MARCH 1 & 2 AT THE TOWN OFFICE—
PLEASE BRING CANNED GOODS & NON PERISHABLES.
THANK YOU—TOWN MANAGER, JOHN HAVERSTOCK

DOG LICENSE REMINDER—DOG TAGS ARE IN.
DOGS ARE REQUIRED TO BE LICENSED EACH YEAR
WITH THE TOWN BY **APRIL 1, 2010**. **Don't wait until the
last day.** A RABIES CERTIFICATE IS REQUIRED.
IF YOU HAVEN'T ALREADY REGISTERED YOUR DOG,
PLEASE STOP BY THE TOWN OFFICE
BEFORE APRIL 1, 2010.

QUESTIONS CALL 802-483-6500 EXT. 11, 12, OR 13